



**Making waves:** Roberto Giulio Rida's Tirreno wooden cabinet, with the Nilufar Gallery, at PAD London



**At Frieze Masters:** Katherine Bernhardt's Hammerheads, Tostones, Malta De India and Cigarettes, 2015



**Eclectic mix:** above, far left, a Hervé Langlais Op Art chest in ebony and white sycamore, with satin brass top and legs, in a limited edition at Galerie Negropontes, PAD, Berkeley Square. Above left, Hervé van der Straeten's Lustre Origami anodised aluminium lamp, at PAD London. Above, Harold Ancart's Untitled canvas (oil stick and pencil) at Frieze London



**Industrial touch:** right, Charles Kalpakian's Kineticism lacquered wood cabinet, Galerie BSL at PAD London



of the park, it is a museum of the unexpected, combining Pre-Columbian art with Alexander Calder mobiles, for example, with knowledgeable and passionate experts answering questions. Hauser & Wirth and Moretti Fine Art collaborate to place 14th-century Italian panels alongside Hans Arp and Louise Bourgeois; while Karsten Schubert and Tomasso Brothers Fine Art display Bridget Riley with Old Master drawings and ancient portrait sculpture.

16 new and historical works, set in the English Gardens. A major installation on display is Lock (1976-7) by Richard Serra of Peter Freeman Inc in New York. Seven of the sculptures will be on view for three months.

In the last three years, Frieze Masters, offering historical art in a contemporary context, has won praise from Londoners and critics. At the Camden Town end

**FEAST YOUR EYES**

**FRIEZE:** Regent's Park, Premium Day, today, noon-7pm; tomorrow and until Saturday, also noon to 7pm. Daily tickets cost £34 (cheaper tickets now sold out) from frieze.london.com. Combined ticket £50 for Frieze and Frieze Masters.

**FRIEZE MASTERS:** Gloucester Green, Regent's Park, today (Premium Day) 11am to 7pm; tomorrow until Saturday, 11am to 7pm; Sunday 11am to 6pm. Daily ticket £34, or £16 between 5pm and 7pm. Box office ticket collection or print-at-home e-tickets. Fee applies per transaction and not per ticket (friezemasters.com).

**PAD art fair:** Berkeley Square, W1, from today 11am to 8pm, until Sunday, 11am to 6pm. Tickets £20 (pad-fairs.com).

**John Hoyland - Power Stations:** Damien Hirst's Newport Street Gallery, Newport Street, SE11, until Sunday, 10am to 6pm. Free entry (newportgallery.com).

**The Amazing World of MC Escher:** Dulwich Picture Gallery, Dulwich Picture Gallery, SE21 (dulwichpicturegallery.org.uk). Until Sunday, 10am to 5pm, admission £14 (concessions £13).

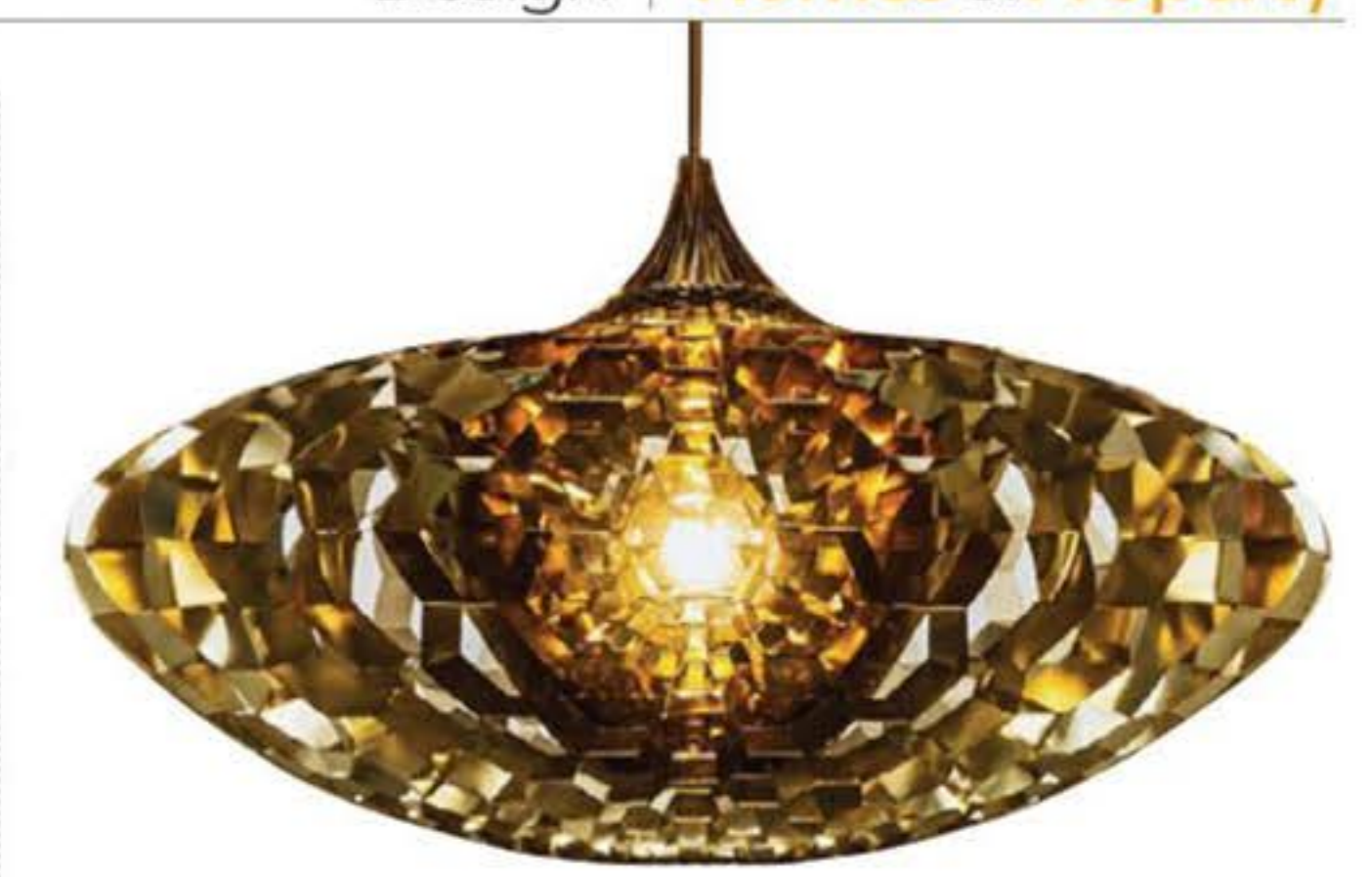
**Giacometti: Pure Presence:** National Portrait Gallery, St Martin's Place, WC2; £15, concessions £13.50. From tomorrow until January 10, 10am to 6pm (npg.org.uk).

**Oliver Eales, Marie Jacoty:** Hannah Barry Gallery, 4 Holly Grove, SE15, today until Saturday, 11am to 6pm (hannahbarry.com).

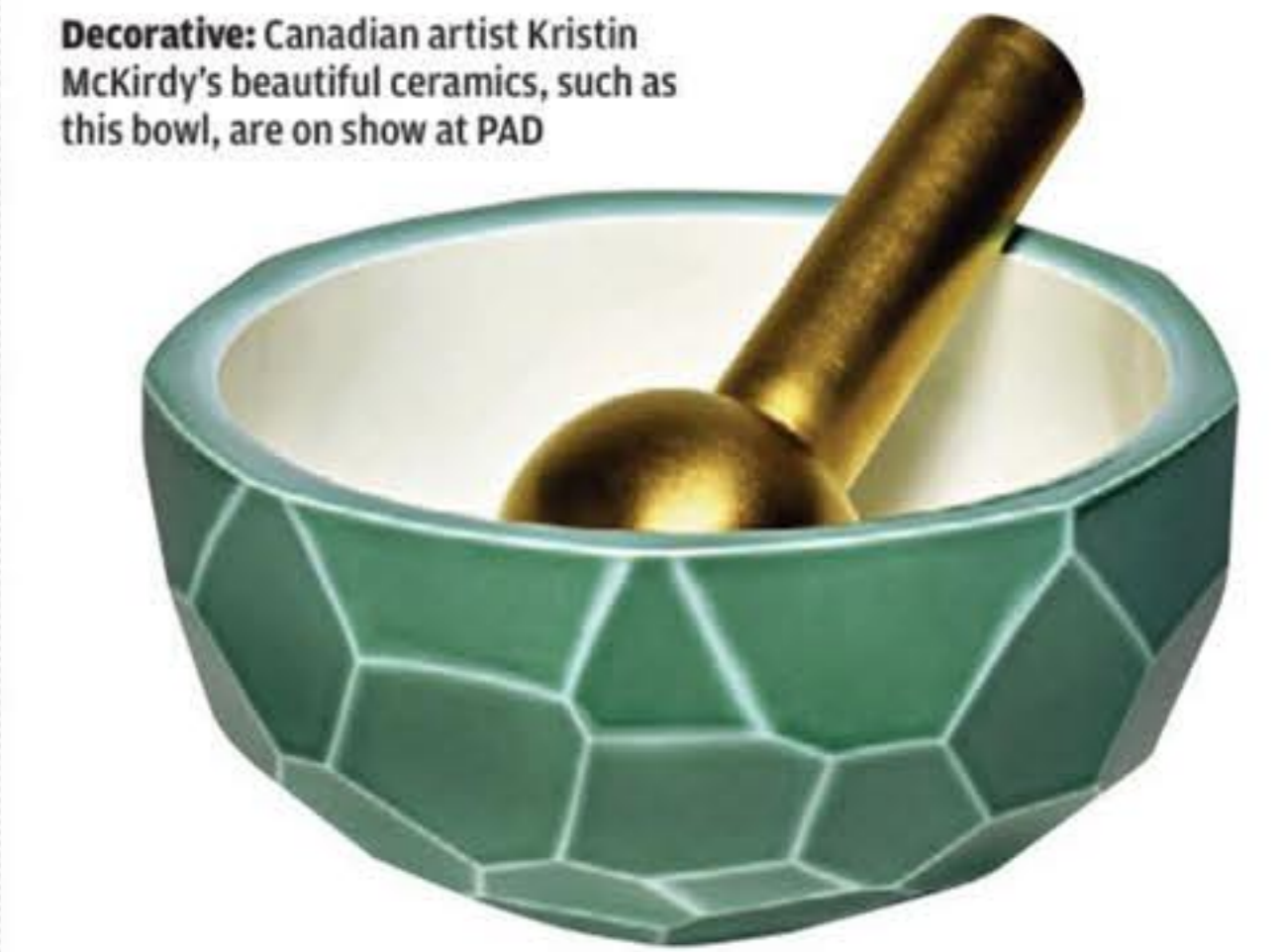
**The Old Police Station:** 114 Amersham Vale, SE14 (theoldpolicestation.org).

**The Sunday Painter:** 1st Floor, 12-16 Blenheim Grove, SE15 (020 7732 7957; theSundayPainter.co.uk) Thursday to Saturday, noon to 6pm.

**Bedwyr Williams:** Limoncello, 340-344 Kingsland Road, E8 (limoncellogallery.co.uk).



**Lighten up:** Bob Lorimer's Ten to the Minus Singularity lamp in brass and acrylic at Gallery FUMI



**Decorative:** Canadian artist Kristin McKirdy's beautiful ceramics, such as this bowl, are on show at PAD

of Italian majolica from the 15th to 17th centuries (Bazaar). Several galleries go the whole hog, creating immersive installations such as Richard Feigen and JP Molyneux's intimate room set - which shows how modern and historical objects and paintings can sit side by side - and Richard Nagy's recreation of a 1912 Viennese sitting room with Egon Schiele art and furniture by Hoffmann, Czeschka and Wagner.

**BEYOND THE FRIEZE**

In Berkeley Square, PAD London, running until Sunday, is the centre of 20th-century decorative arts and design with a dash of art. Prices aren't modest, but this fair's worth a visit to see what is setting trends. Gallery FUMI shows a seat from British designer Max Lamb's instal-

**Everybody Frieze**

London is packed with art ancient and contemporary, home-grown and international, for this fabulous fair, says **Corinne Julius**



**Oh, eye say:** Paul McCarthy's Dick Eye, 2002, in blue silicone, is 56cm tall. Find it at Hauser & Wirth

**N**OW in its 13th year, Frieze London focuses the eyes of the art world firmly on the capital. Among the leading global contemporary art fairs, Frieze has spawned fringe events and its fair share of brouhaha, while offering Londoners the chance to view top-notch exhibits - and gain an education.

Frieze London runs from today until Saturday in Regent's Park, while Frieze Masters - also in the park, but giving a unique view of the relationship between ancient and new art - runs for an extra day. Frieze Masters will show work made pre-2000, while Frieze London shows mainly post-2000 works.

A wealth of separate exhibitions adding to the London art experience

**All angles:** six-piece Gold Quartz Table by Madrid-based artists Juan and Paloma Garrido, at the Garrido Gallery, PAD London

include new openings, such as an MC Escher show at Dulwich Picture Gallery, and from tomorrow, the Alberto Giacometti Pure Presence show at the National Portrait Gallery.

Frieze features more than 164 galleries from 27 countries presenting what they consider their most significant and exciting contemporary artists. You can also buy art, even if your pockets aren't

deep. Many of the works, while worth seeing, may be beyond the reach of most Londoners. However, Frieze has introduced a slightly less expensive section called Focus, which gathers younger galleries, offering visitors the chance to buy emerging talent with prices from about £5,000. These include a floor-based "water relief" by young Londoner Samara Scott of The

Sunday Painter gallery in Peckham, and a multifaceted ceramic presentation by another up-and-coming Londoner, Jesse Wine, of Hackney's Limoncello gallery.

The Live section presents performance-based art, such as portrait sittings by Ken Kagami at Tokyo's Misako & Rosen gallery. A free outdoor exhibition in Regent's Park Sculpture Park shows

**loaf**

BEDS, SOFAS & FURNITURE FOR LOAFERS

LOAF.COM

**CAMERICH**  
camerich.co.uk 020 7372 9887

OUR PRICE PROMISE  
Quality designer sofas sold for around **50% LESS** than you'd expect to pay from other leading high end retailers

Visit [camerich.co.uk](http://camerich.co.uk) for more information

Lazytime Sofa, £2907  
Next day delivery available  
15 year guarantee  
Removable covers

Chelsea | Islington | Swiss Cottage | Notting Hill | Kingston | Fulham | Westfield London | West End